



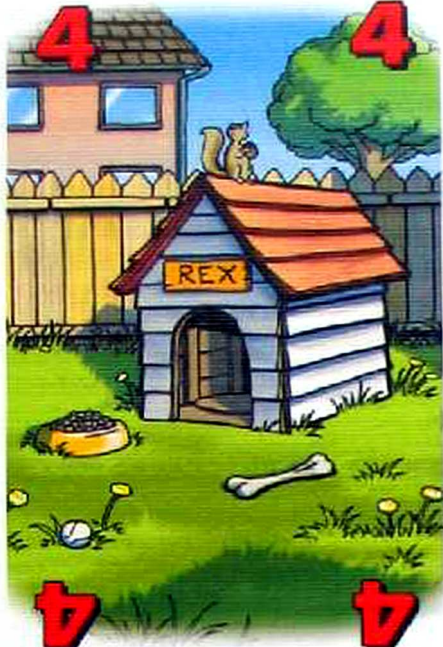
1

1



1

1

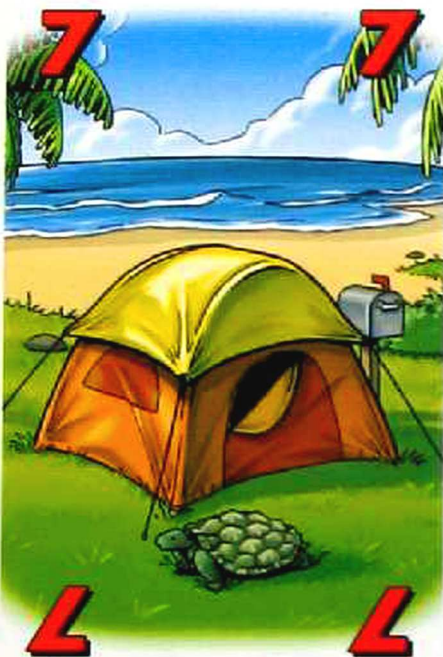


4

4

4

4

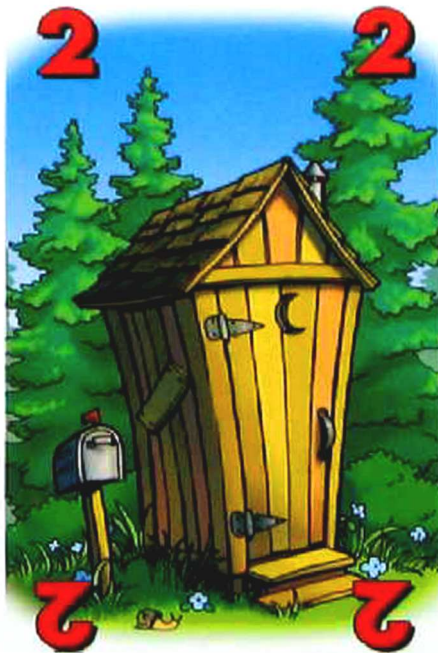


7

7

7

7



2

2

2

2

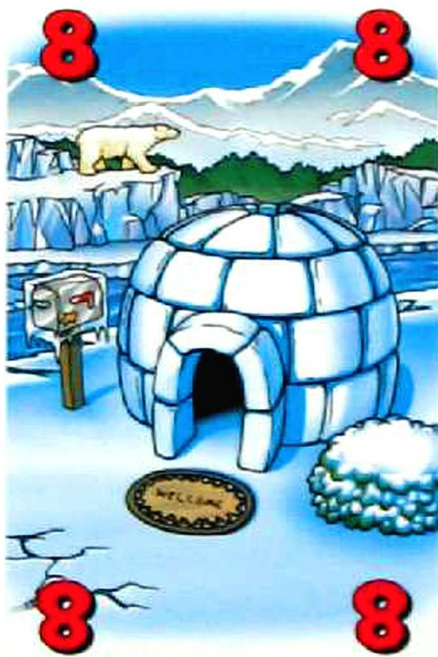


5

5

5

5



8

8

8

8



3

3

3

3



6

6

6

6

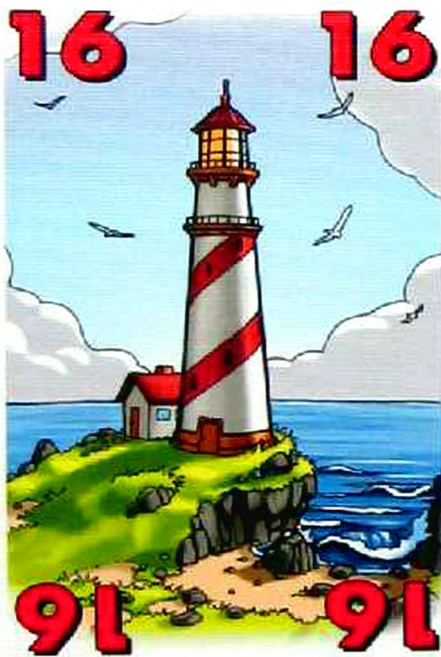
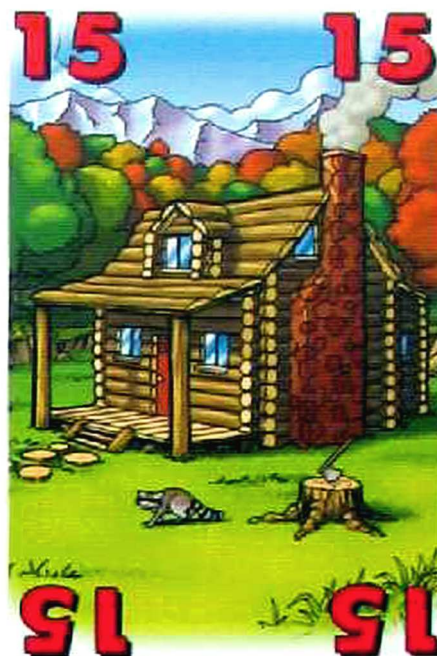
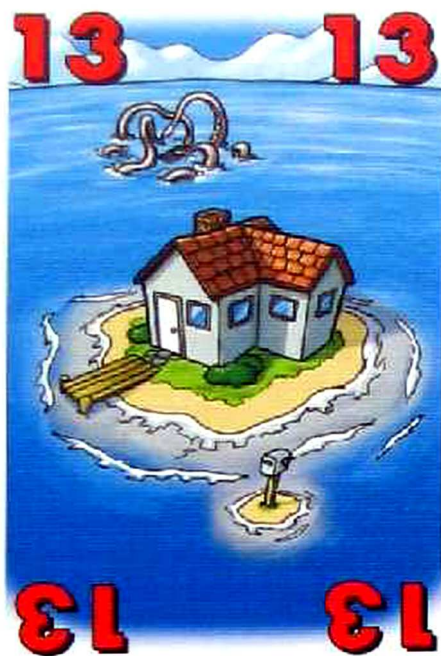


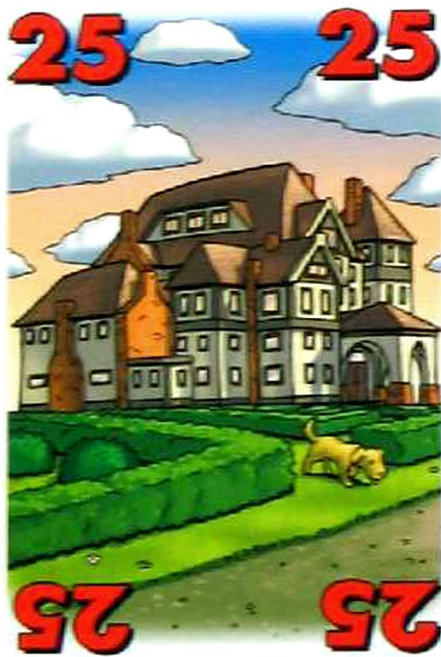
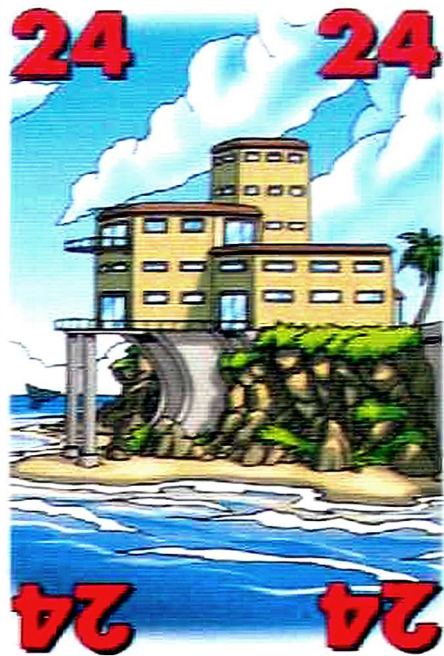
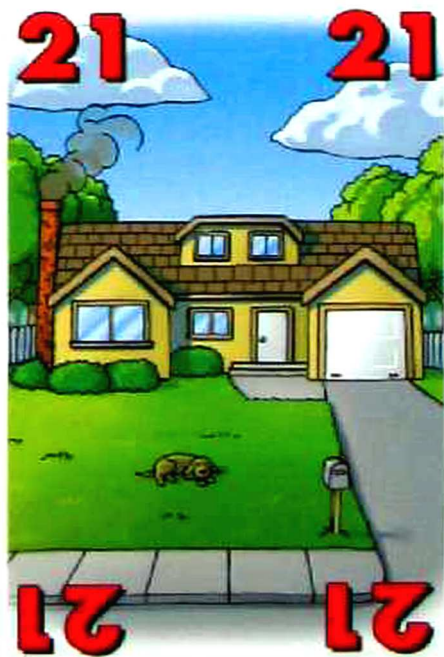
9

9

9

9







TURN ORDER

1. Draw a spell card *then* cast spells*
2. Select an army card & cast spells*
3. Summon (if planeswalker was selected) & cast spells*
4. Move selected figure(s)
5. Attack with selected figure(s)
6. Cast spells*
7. End your turn - Move turn tracker.
If you have more than seven cards, discard to seven. Then player to left now takes their turn.

** You may only cast up to 3 spells during your entire turn.*

Colorcrayons' Workshop & Exhibit

TURN ORDER

1. Draw a spell card *then* cast spells*
2. Select an army card & cast spells*
3. Summon (if planeswalker was selected) & cast spells*
4. Move selected figure(s)
5. Attack with selected figure(s)
6. Cast spells*
7. End your turn - Move turn tracker.
If you have more than seven cards, discard to seven. Then player to left now takes their turn.

** You may only cast up to 3 spells during your entire turn.*

Colorcrayons' Workshop & Exhibit